

# Life

TEL  
HAI

The Magazine of Tel Hai Retirement Community | Spring 2025

EXPLORE. ENCOUNTER. ENJOY.

Day in the  
Country  
Open House

See inside  
back cover



# Discover The Best



Of the Retirement  
Lifestyle

Of Health  
Care Services

Of Thriving Together  
in Community





*Tel Hai Life* Magazine  
Spring 2025

**EDITOR**  
Jolene Weaver  
Director of Communications

**DESIGN**  
Anstey Hodge Advertising Group,  
Roanoke, VA

**PHOTOGRAPHY**  
The Premise Studio, Lancaster, PA

**PRINTER**  
DavCo Advertising Inc., Kinzers, PA

To opt out of receiving *Tel Hai Life* or for address changes, please direct to Tel Hai Retirement Community, Attn: Marketing, P.O. Box 190, Honey Brook, PA 19344, call (484) 796-4262 or e-mail [info@TelHai.org](mailto:info@TelHai.org)

*Tel Hai Life* is published by Tel Hai Retirement Community. Tel Hai Retirement Community is an equal opportunity employer. The views and opinions expressed in *Tel Hai Life* do not necessarily represent the official policies of Tel Hai Retirement Community, nor are they always the opinions of the editor. Additionally, corresponding comments are the personal opinions of the original authors and do not represent the official policies of Tel Hai Retirement Community. Tel Hai Retirement Community complies with applicable Federal civil rights laws and does not discriminate on the basis of race, color, national origin, religion, sex (including gender identity and sexual orientation), familial status, and disability. Tel Hai Retirement Community does not exclude people or treat them differently because of race, color, national origin, religion, sex (including gender identity and sexual orientation), familial status, and disability in certain health programs or activities.

## CONTENTS

- 1 Discover the Best
- 4 Thriving Together
- 6 Maple Knoll: A Peaceful, Picture-Perfect Neighborhood
- 8 Online Explorations
- 9 Life on the Hill
- 12 Art & Worship



*Why moving makes sense!*

**R**etirement is a time to embrace new opportunities, focus on what brings you joy, and ensure you have the support needed for your future.

Every day presents new moments to be filled by doing what you love—not the stress of home repairs and endless to-do lists. Why spend your time on household maintenance when you could be staying active, connecting with friends, and pursuing your passions?

By moving to Tel Hai—a Life Plan Community—you're not just choosing a new home; you're investing in a financially secure lifestyle. At the *Hill of Life*, you'll enjoy a vibrant community that enhances your well-being, fosters meaningful connections, and provides the freedom to discover the best of purposeful living.

*Here's why making the move now makes sense...*

## Discover the retirement lifestyle you need and deserve!

Imagine waking up each day with no home maintenance worries and no unexpected home expenses—just the freedom and independence to enjoy life on your own terms. In choosing Tel Hai, you're moving to a community that's providing a worry-free lifestyle designed to support your well-being and interests.

### MEANINGFUL SOCIAL CONNECTIONS

Say goodbye to isolation and hello to a friendly community filled with warm and welcoming neighbors. Whether it's attending a live performance, sharing dinner with new friends, or working on your backstroke, you'll find plenty of ways to get and stay socially connected. According to the Age Well Study by Mather LifeWays Institute on Aging and Northwestern University, research has shown that "69% of residents reported that moving to a life plan community 'somewhat or greatly improved' their social wellness."

### ENDLESS ACTIVITIES & AMENITIES

Life at Tel Hai is centered on enjoying the unmatched amenities found throughout the campus, like our two pools, two community centers, multiple arts and hobby spaces and, of course, more than 4.3 miles of wooded hiking trails and walking paths. Resident-led interest groups, robust wellness activities and dynamic programming provide limitless ways to spend your days doing what you love.



### PEACE OF MIND

Perhaps one of the greatest benefits of a Life Plan Community is knowing that support is available if and when you need it. You can live independently now while having easy access to on-site health care services should your needs change. This means you won't have to relocate or scramble to find care later—a major relief for both you and your loved ones.



## Discover Health Services Comprehensive Continuing Care

Residents of Tel Hai have preferred and direct access to the full range of continuing care services if and when needed. As care needs change as you age, we meet you where you are and help you along the way.

Together, Tel Hai's compassionate team of expert health care professionals and providers delivers all services onsite, within our community, eliminating unnecessary and difficult moves to other facilities.

Access to care—that's the continuing care advantage!



- **Personal Care:** Personalized resident-centered nursing support with medication assistance, meals, transportation, housekeeping, and engaging life enrichment activities
- **Memory Support:** Compassionate memory care in a secure, home-like environment where residents experience dignified living with robust, dementia-focused programming
- **Short-Term Respite Care:** Supportive 7- to 30-day short-term stays for individuals requiring additional supervised care in a fully furnished, private accommodation with en-suite bath and access to personal care features
- **Health Care:** Exceptional resident-centered skilled nursing care in private and semi-private accommodations, delivering seamless, highly personalized care with compassion, dignity and respect

- **Short-Term Rehab:** Comprehensive resident-centered rehabilitation designed for swift recovery after surgery or hospitalization, maximizing function, independence, and well-being through personalized therapy support
- **Outpatient Therapy:** Specialized rehabilitation services, including post-surgery, fall recovery or ongoing care through occupational, physical and speech therapies
- **Home Care:** Convenient interim or long-term, non-medical home care where residents maintain their highest level of quality living in the comfort of their own home
- **Home Health:** Clinical medical care often prescribed following a hospitalization, including skilled care, hospice care, administration of medications including injections, and wound care



## Discover the financial benefits!

Moving to Tel Hai provides cost predictability and financial benefits that often outweigh the expenses of remaining in your home. You have the security of a safety net and a plan in place with access to health services. Residents chart their own course and live out their retirement as they choose.

### ELIMINATE HOME EXPENSES

With your current home, you can be saddled with a variety of unknowns, from increases in property taxes to costly repairs. Not to mention annual insurance hikes, utilities, maintenance expenses, lawn care and snow removal. It's knowing you are in a home and community you can afford.

### AFFORDABLE ACCESS

Upon your move to Tel Hai, the entrance fee is a one-time fee paid that is based on the square footage and accommodation selected for occupancy—such as an apartment, townhome or cottage. Most importantly, upon residency, you're provided priority access to Health Services, if or when your health needs change. *Refer to the listing on Page 2 on all Health Services offered at Tel Hai.*



### PREDICTABLE EXPENSES

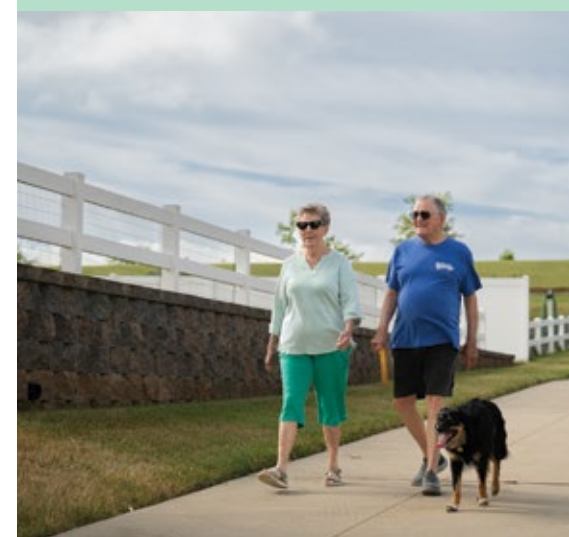
There is comfort in knowing that at Tel Hai, you'll have a predictable and affordable monthly service fee, which provides a wide range of amenities and services such as building maintenance, lawn/grounds care, life enrichment activities, social programming, fitness facilities, exercise classes, etc. This fee also includes "Flexible Dining Dollars," which is a built-in benefit that can be used at any on-campus Culinary Services venue.

### FLEXIBLE CARE OPTIONS

Tel Hai is a fee-for-service structured community, which provides flexibility regarding your future care options. A fee-for-service contract includes all the benefits of residential living and amenities, but features a lower monthly fee and lower entry fee compared to other continuing care contracts. You're only paying for short-term or long-term Health Services you actually use, if or when your health needs change.



By moving to Tel Hai, you gain a stable, manageable financial future—one where you know exactly what to expect and can confidently afford both your home and the vibrant lifestyle, community connections and amenities that come with it.



Ready to get started? Jump to Page 8 to learn more about securing your future today!

The path to residency has never been easier. Download an online brochure now at: [TelHai.org/information](https://TelHai.org/information)

# Thriving Together

Where meaningful connections and friendships flourish



From shared interests to lasting friendships, residents are fostering a strong sense of community and fulfilling their retirement experience through meaningful connections.

The *thriving together* concept embraces what it means to live “in-community”—where neighbors become friends and new residents plug into a vast array of campus clubs, committees, ministries and interest groups. From trains to trips or pottery to pickleball... we’ve got you covered.

It’s those connections—combined with a vast array of unmatched amenities and dynamic programming—that remain a hallmark of the retirement lifestyle offered by Tel Hai.

Imagine yourself thriving in a community where there are endless fun and engaging ways to spend your days.

A new chapter awaits—will you join us?

## Community Connections

### ARTS & WORSHIP

Bible Discussion Groups  
Chorus & Chime Choir  
Fiber Artist  
Quilting Club  
Mindful Meditation  
Nimble Fingers  
Pottery  
Practicing Painters  
Watercolors  
Women’s Bible Study

### COMMITTEES & EDUCATIONAL INTERESTS

Arts & Display Committee  
Great Decisions Group  
Library & Book Nook Committee  
Life Enrichment Committee  
Movie Committee  
Performing Arts Committee  
Resale Shop Committee  
Trips Committee  
Volunteer Engagement Committee  
Worship Committees

### WELLNESS

Aqua Aerobics Class  
Aqua Arthritis Class  
Deep Water Aquatic Class  
Pickleball  
Ping-Pong  
Shuffleboard  
Strength & Balance  
Strengthen & Tone  
Tai Chi  
Tennis  
Total Body Toning  
Tune Up Time  
Yoga  
Zumba

### GAMES & OUTDOOR ENDEAVORS

Billiards  
Bocce  
Book Club  
Bridge Card Club  
Farmers Club  
Hands-on Gardening Club  
Mahjong  
NY Times  
Crossword Puzzle  
Pinochle Card Club

### SOCIAL & SPECIAL CONNECTIONS

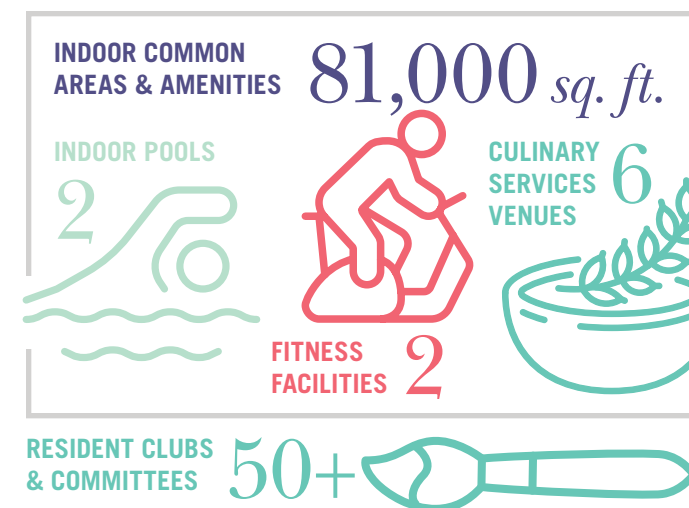
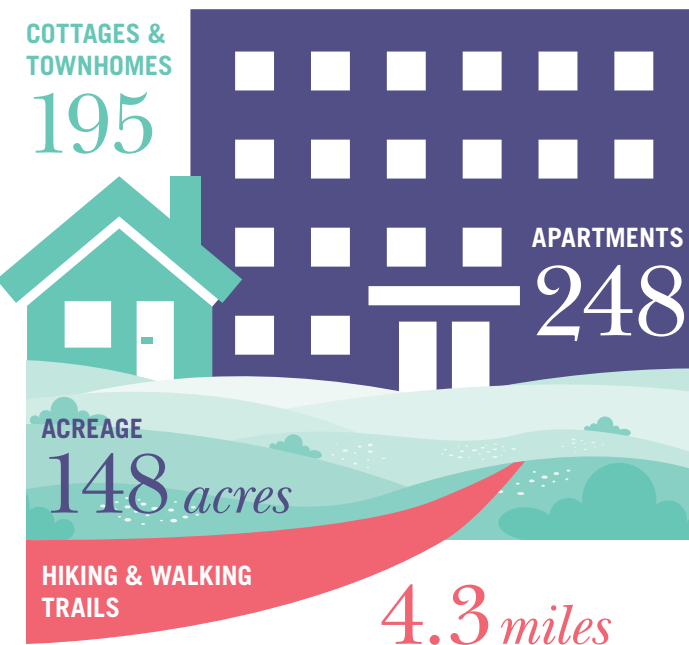
Color with Me  
Line Dancing  
Newbies Group  
Train Club  
Ukulele Band  
Veterans Group  
Widows Enjoying Lunch (WEL)  
Woodcraft Shop Club

## A Look Inside

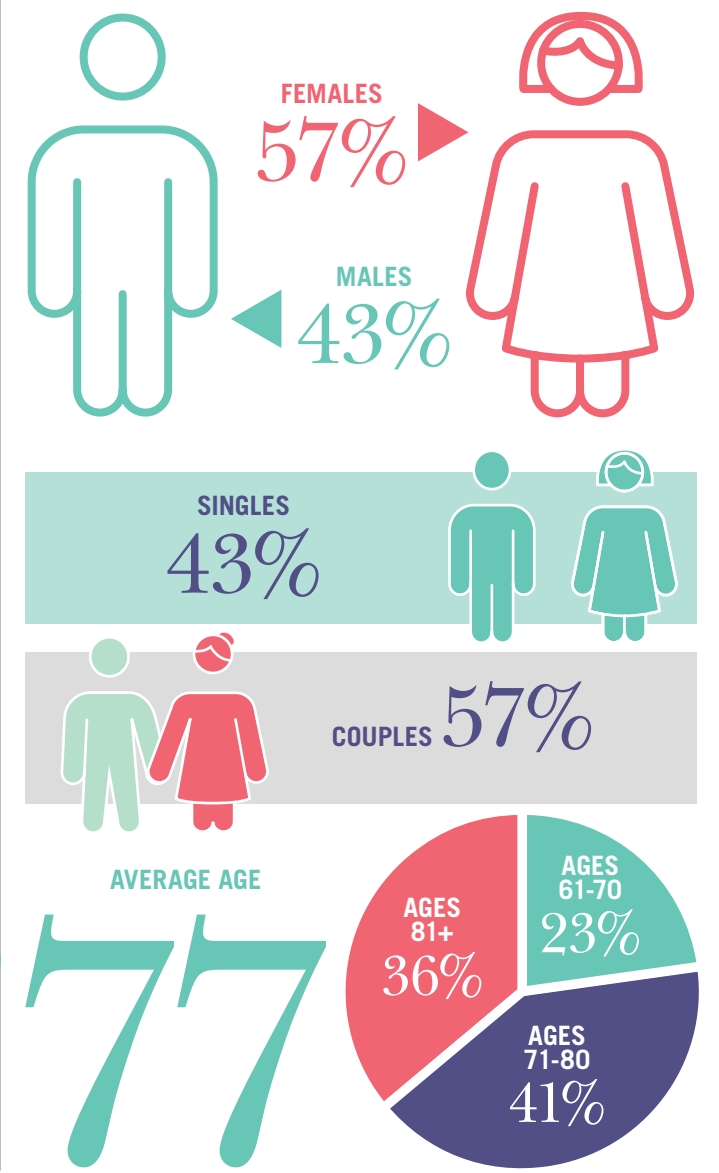
Discover what makes life at Tel Hai truly special with *A Look Inside*, which highlights our vibrant community, rich connections, fulfilling lifestyle options and resident profiles of those who have chosen to call the *Hill of Life* home!



## RESIDENTIAL LIVING



## MOVE-IN METRICS





Maple Knoll: A Peaceful,  
Picture-Perfect Neighborhood  
*Affordable Cottages Designed for You*

**Maple Knoll** *Cottages at Tel Hai* Featuring 88 beautifully crafted brick homes, Tel Hai's Maple Knoll Cottage neighborhood blends seamlessly with its natural surroundings, creating a peaceful and picturesque retirement retreat.

**T**ucked within mature, tree-lined streets, Maple Knoll offers affordable first-floor living—thoughtfully designed to provide you ample living and storage space with plenty of room to entertain family and friends.

Residents have customized their spaces to embrace open-concept kitchens, reimagined layouts, and high-quality finishes like luxury vinyl

plank flooring, quartz countertops, and Wi-Fi-enabled, space-saving appliances.

Maple Knoll is located near a community center featuring amenity spaces and continuing care services including personal care and nursing care. Residents enjoy the independence of residential living with the assurance of being close by continuing care services.

**MAPLE KNOLL COTTAGES  
AT A GLANCE**

- Entrance Fees starting at \$220,896
- Monthly Fees starting at \$1,435
- Ranging in size from 936 sq. ft. – 1,700 sq. ft.
- Accommodation styles including Standard, Large & Deluxe
- Select features including sunrooms, oversized garages, patios & full basements

Are you ready to explore an affordable future in a Maple Knoll Cottage? RSVP to our upcoming block party or contact us today at [info@TelHai.org](mailto:info@TelHai.org), (484) 796-4262 or online at [TelHai.org/visit](http://TelHai.org/visit)



Maple Knoll  
Cottages

**Block  
Party**

**Tuesday, June 17, 11 AM – 2 PM**  
Fun Eats, Open Homes &  
Great Conversation!

Step into the heart of our charming Maple Knoll Cottage neighborhood for a lively and laid-back block party.

We're closing the streets to bring neighbors together, explore open homes, and enjoy tasty bites served from 11 AM – 1PM.

Don't miss out on the fun!

RSVP required by June 6. Call Marketing at (484) 796-4262, email [info@TelHai.org](mailto:info@TelHai.org) or register online by visiting: [TelHai.org/blockparty](http://TelHai.org/blockparty)

*Complimentary & Confidential*  
**Memory Screening**

Wednesday, August 6, 10 AM – 3 PM



*Forgetful? Trouble concentrating?  
Difficulty performing familiar tasks?*

If you have concerns about memory loss—for yourself or someone you know—join us for a complimentary, confidential and private in-person memory screening by Tel Hai's professional Lakehouse Memory Support team members.

**A memory screening:**

- is a simple and non-invasive evaluation tool to check memory and thinking skills
- consists of questions and tasks testing memory, language, thinking ability & intellectual functions
- provides information and results that can be shared with a health care professional if follow-up is needed and is an evaluation only, not a diagnosis

*Event held at The Hillside Amenities of Tel Hai: Grandview Commons, located at 1301 Tree Line Drive, Honey Brook, PA 19344.*

**Registration required and limited spaces available. Upon registration, your preferred time for a personalized, private screening will be selected. To register, contact the Admissions Coordinator at (610) 273-9333, ext. 2446 or email [info@TelHai.org](mailto:info@TelHai.org) to get started.**

## Securing Your Future Today

*The path to residency has never been easier!*

Experience a preview of the Tel Hai campus and get a sneak peek of our community online. It's easier than ever to discover what makes Tel Hai such a special place!

We're a community like no other—inviting spaces, outstanding amenities, and wonderful neighbors. Residents are experiencing the fun, joy and excitement of living “in-community” at the *Hill of Life*. Their todays and tomorrows are filled with freedom, inspiration, impact and endless potential.

Will you join them?



### DOWNLOAD THE E-BROCHURE

Request our online e-brochure or a detailed mailed brochure, which includes information about the Tel Hai lifestyle, services, amenities and pricing.

[TelHai.org/information](http://TelHai.org/information)

### SCHEDULE A VISIT

We encourage future residents and their families to visit our community. We'll discuss what life is like at Tel Hai and tour the spaces and places that interest you.

[TelHai.org/visit](http://TelHai.org/visit)

### PREVIEW THE COMMUNITY

Prior to your visit, “go virtual” and tour cottages, apartments, and common spaces. Our videos give you a great insight into the homes and lives of residents who are loving life at Tel Hai!

[TelHai.org/virtual-tours](http://TelHai.org/virtual-tours)

### APPLY FOR RESIDENCY

Upon successful completion and acceptance of your application for residency, you'll be eligible to enroll in the Ready-Set-Go Program and access our Moving Resources Program.

[TelHai.org/residency](http://TelHai.org/residency)

### CONNECT WITH US

There are countless ways to begin connecting with us in person. We encourage you to explore our upcoming events and become immersed in life at Tel Hai before you move in!

[TelHai.org/connect](http://TelHai.org/connect)



**TRACY WEAVER**, Residential Living Counselor, loves developing relationships with future residents and their families. She'll help you navigate your senior living experience at Tel Hai, explore your options and get started on the path to residency. Tracy's a pro at explaining all things Tel Hai, like the benefits of our Life Plan Community, continuum of care and lifestyle.

# Life ON THE Hill

SPRING & SUMMER 2025

### EVENTS. ENTERTAINMENT. ENGAGEMENT.

Life at Tel Hai is enriching and rewarding! Our calendars are jam-packed with life-enhancing events that will keep your mind engaged, your body energized, and your spirit lifted. We welcome you to attend any of our dynamic events, including educational lectures, entertaining concerts and enrichment opportunities. Programming brought to you by Tel Hai's resident-led Life Enrichment Committee & Performing Arts Series.



### Women at the Valley Forge Encampment

Monday, April 14, 2:15 PM\*\*\*

Hundreds of women were at Valley Forge during the winter of 1777-1778. Some officers' wives, like Martha Washington, came long distances to be with their husbands. Other women at camp served with Washington's military family, or followed the Army because they had nowhere else to go. Join Dr. Nancy K. Loane as she takes us on a journey through history.



### Travelogue: New Zealand & Moorea

Monday, April 21, 2:15 PM\*\*\*

Join Tel Hai's Scott Burkholder—Vice President of Facilities & Project Management—and his wife Tracy as they share captivating photos and delightful stories from their 30th wedding anniversary trip to New Zealand and the French Polynesian island of Moorea. They encountered many exciting “firsts” and can't wait to share these unforgettable experiences with you.



### The Lincoln Four: The Pursuit, Capture & Execution of Lincoln's Conspirators

Monday, April 28, 2:15 PM\*\*\*

On April 14, 1865, President Lincoln was mortally wounded while attending the play *Our American Cousin* at Ford's Theater as the Civil War was drawing to a close. The assassination was carried out by the well-known stage actor John Wilkes Booth as part of a larger conspiracy in a bid to revive the Confederate cause. Michael Jesberger, historical lecturer, tour guide and re-enactor, will walk us through the details of the investigation to apprehend the conspirators.



**Bicycle Across Iowa:  
A Mom & Daughter Duo**  
Monday, May 5, 2:15 PM\*\*

Join Tel Hai's Erika Snyder—Volunteer Coordinator—and her 11-year-old daughter Lydia for a talk on their cycling adventure in July 2024: the 51st Register's Annual Great Bicycle Ride Across Iowa (RAGBRAI). The route was 434 miles long with 18,375 feet of climb. They'll share about their 1,600-mile training regime, history on RAGBRAI, and highlights of the adventure!

**Ben Mauger's Mission Impossible Band**  
Friday, May 16, 7:30 PM\*\*

Mauger's 8-piece band—Mission Impossible—has a repertoire including Big Band swing, show tunes, and songs from the '60s and '70s. The group also plays favorites from bands like Herb Alpert & the Tijuana Brass, The Blues Brothers & Chicago. The name was picked because it's nearly impossible to find 8 musicians who know all the different styles of all this great music... but Ben found them!



**Pennsylvania Chamber Artists: Flute Duos**  
Friday, May 23, 7:30 PM\*\*

This concert presents a beautiful repertoire for two flutes and piano, including impressionists Debussy and Gaubert, and newly inspired works by Uebayashi and Dorff. Alto flutes and chimes in this varied program by Pennsylvania's newest chamber ensemble! Jocelyn Crosby and Faith Wasson are on flutes, as Douglas Wimer joins them on piano.

**Galena Brass**  
Friday, June 6, 7:30 PM\*\*

Founded in 1995 in Bucks County, the Galena Brass band epitomizes versatility. From classical to Dixieland and rock to polka, a Galena Brass performance is engaging and energetic. They've performed at Longwood Gardens, Christmas at the Stadium in Reading, Peddler's Village, Phoenixville's Dogwood Parade and Malvern's Memorial Parade.



**Ryan Coleman Band**  
Friday, June 13, 7:30 PM\*

Born and raised in southeastern Pennsylvania, Ryan Coleman is an award-winning country music singer and songwriter from NBC's hit TV show *The Voice*. His debut single "That's What I Do" and additional singles "Take It From Me" and "Divebar Broken Heart" reflect songwriting centered on growing up in a blue-collar world. With hundreds of gigs under his belt, Ryan built a band of brothers that will be sure to entertain.

**The 49ers Chorus Presents: Route 29**  
Friday, June 20, 7:30 PM\*

The 49ers Chorus was founded in 1952 and has been delighting audiences for 70 years throughout Chester County with repertoire of live music, including classic and contemporary works. This year's show will take us across our great country exploring a variety of music genres from Americana to Broadway to folk!

**Pianist Jeffrey Uhlig & Vocalist Aaron Cafaro: Best of Broadway**  
Wednesday, July 9, 7:30 PM\*\*

Vocalist Aaron Cafaro—joined by Tel Hai favorite Jeffrey Uhlig on piano—will perform a concert showcase blending classic Broadway favorites and timeless popular songs. Featuring a mix of musical theater and beloved standards, the program offers a journey through iconic melodies and heartfelt storytelling.

**The New Individuals**  
Thursday, July 17, 7:15 PM\*

The New Individuals are a Schuylkill County-based "best of the '60s and '70s" show and dance band that truly has a lasting legacy. Since 1966, they have performed in many of the Northeast's most prestigious venues. Influences include the Beach Boys, Frankie Valli and the Four Seasons, the Temptations, Four Tops, Buddy Holly and the Rolling Stones!



**Voices of Legends: Eric Kearns**  
Friday, July 25, 7:15 PM\*

Eric Kearns is a singing impressionist who masterfully imitates singers from the '50s through the '80s during his engaging, high-energy performance. Performing more than 150 shows annually, Eric's continually growing repertoire of more than 100 legendary singers and has received rave reviews throughout the country.



**A Swingin' Summer: The M&J Big Band**  
Friday, August 1, 7 PM\*

The M&J Big Band—an 18-piece powerhouse ensemble from Pottsville—will take you on a musical journey from the timeless Big Band classics of the '30s and '40s to the catchy pop hits of the '60s, '70s, and beyond. With their energetic brass and wind sections, and smooth rhythms, you'll be tapping your feet all night long. Don't miss the chance to experience the sounds of a bygone era!



**Swing! By Servant Stage**  
Thursday, August 7, 7 PM\*

SWING! is a high-energy Broadway musical that celebrates the vibrant dance and music style of swing. Featuring a series of dance numbers rather than a traditional narrative, the show highlights the athleticism and excitement of swing dancing, from jitterbug to Lindy hop. The music ranges from jazz standards to more contemporary takes and creates an electrifying atmosphere that captures the spirit and joy of this classic American art form.



# The Resale Shop

The Tel Hai Resale Shop features a vast array of donated items available for resale to the public. Extremely affordable—and many times "one-of-a-kind"—items featured in the shop include furniture, jewelry, china, pottery, glassware, collectibles and endless treasures. Located in the Hertzler Apartment Building, all sales support residents who outlive their ability to pay for the care they require. Visit [TelHai.org/resale](http://TelHai.org/resale) for details.

**WE'RE OPEN**  
9 AM – 1 PM

Friday, April 25 | Friday, May 16  
Friday, June 20 | Friday, July 18  
Friday, August 15

## Artsapes IN THE GALLERY

Tel Hai boasts an impressive array of professional, non-juried, and in-house resident artists' work and collections on display in the Clark Gallery, located within StoneCroft Commons. The resident-led Art Task Force welcomes the public to enjoy the gallery and discover more about the featured artist, their technique and each curated collection.



MEET  
GEOFFREY

Thursday, July 31 from  
1-3 PM in the gallery.



MEET  
DENISE

Thursday, September 25 from  
1-3 PM in the gallery.

### APRIL & MAY 2025

#### Featuring Beverly Bruns

Beverly Bruns—a Tel Hai resident artist—puts her fine art training to brilliant use creating images that bring to life the richness of colors found on the East Coast. Raised in Chester County, she shares her deep appreciation of the area by capturing the “colors of the grey-blue Atlantic with welcoming beaches and rocky shores, hectic greens of summer forests, yellows, oranges and browns of fall and winter.” In “Kennett Meeting House” those autumn hues reign supreme, providing a wonderful contrast to the simplicity of the white meeting house. Warm light bathes the scene, effectively bringing peace and serenity to the viewer’s soul.

### JUNE & JULY 2025

#### Featuring Geoffrey Burgess

Local photographer Geoff Burgess is a man of many passions and talents! Hailing from Downingtown, Geoff is assisted by his wife Bernice and turned to photography as his artistic outlet. With the help of his mentor, Ed Heaton, along with Ed’s wife, Kelly, and son Zach, Geoff developed his knack for photography. He has an extensive portfolio, including nature, art & architecture, travel, people, and macros—intense closeups of flowers. When not operating a camera, Geoff—a physician by trade—may be seen wearing a stethoscope, or holding a golf club or one of his many grandchildren.

### AUGUST & SEPTEMBER 2025

#### Featuring Denise Hill-Kimes

Denise Hill-Kimes has rapidly emerged as a local watercolor artist, celebrated for her realistic details and vibrant creations. Her journey into the world of watercolor painting is a testament to the transformative power of art. Her journey as an artist is enriched by her diverse background and life experiences, originally hailing from the picturesque state of Wyoming. Her love for the natural world and her ability to see beauty in the ordinary are deeply influenced by her upbringing in such a scenic environment. Her journey into the world of watercolor art is a story of perseverance and the transformative power of creativity, and Denise’s dedication to her craft is inspiring.

*The Clark Gallery is located at 4000 Tree Line Drive, Honey Brook. Parking is available adjacent to the entrance of StoneCroft Commons.*

## Worship WITH US

### Good Friday Worship Service

Friday, April 18, 2 PM  
Auditorium/Chapel

### Easter Sunrise Service

Sunday, April 20, 6:30 AM  
The Hillside Amenities of Tel Hai:  
Outdoor Amphitheater\* (Weather Permitting)

### Memorial Day Service

Monday, May 26, 11 AM  
StoneCroft Center for Worship & Performing Arts

*Our interdenominational services and programming welcomes individuals of all faiths. The StoneCroft Center for Worship & Performing Arts is located at 4000 Tree Line Drive. Tel Hai’s Auditorium/Chapel is located at 1200 Tel Hai Circle.*

*\* The Hillside Amenities of Tel Hai: Outdoor Amphitheater is located at 1301 Tree Line Drive.*



Discover the charm of our community at our ever-popular annual “Day in the Country” open house!

It’s the ideal day to explore your interests with a self-guided tour of:

- beautifully appointed residential living accommodations, including cottages & apartments
- dynamic campus amenities like our wellness spaces & pools
- expansive common areas like our delicious on-campus dining venues
- quality health services, including personal care

We’re a close-knit community where the robust and rewarding lifestyle you want today meets the assurance of continuing care services for your future.

You won’t want to miss this unique opportunity to explore, encounter and enjoy the *Hill of Life!*

*Event registration begins at StoneCroft Commons, located at 4000 Tree Line Drive, Honey Brook. Follow Beaver Dam Road to the West Entrance of Tel Hai, then turn onto Tree Line Drive and follow signs to StoneCroft. Parking is available adjacent to the entrance.*

Tel Hai  
Redefining Retirement™



RSVP requested. Call Marketing at (484) 796-4262, email [info@TelHai.org](mailto:info@TelHai.org) or register online by visiting: [TelHai.org/DIC](https://TelHai.org/DIC)



## Join Us On Campus at the “Hill of Life”



### Discover the charm of our community at our ever-popular annual “Day in the Country” open house!

It's the ideal day to explore your interests with a self-guided tour of residential living accommodations, including cottages and apartments. View our expansive campus amenities, common areas and health services, including personal care.

You won't want to miss this unique opportunity to explore, encounter and enjoy the *Hill of Life!*

Event registration begins at StoneCroft Commons, located at 4000 Tree Line Drive, Honey Brook. Follow Beaver Dam Road to the West Entrance of Tel Hai, then turn onto Tree Line Drive and follow signs to StoneCroft. Parking is available adjacent to the entrance.



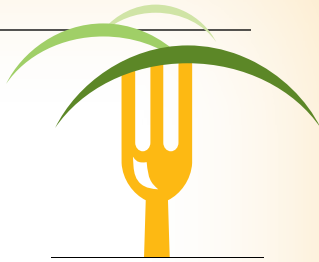
RSVP requested. Call Marketing at (484) 796-4262, email [info@TelHai.org](mailto:info@TelHai.org) or register online by visiting [TelHai.org/DIC](http://TelHai.org/DIC)

### “Taste of Tel Hai” Luncheons

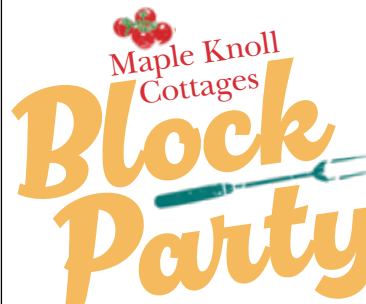
Join us for “A Taste of Tel Hai” event to learn more about the *Tel Hai* lifestyle. In addition to a delicious, complimentary lunch and presentation, you'll learn about the residential living options at our community. The luncheon begins at 11 AM.

<b>Tuesday, May 13</b>	RSVP by May 6
<b>Thursday, June 12</b>	RSVP by June 5
<b>Tuesday, July 15</b>	RSVP by July 8
<b>Tuesday, August 12</b>	RSVP by August 5

Seating is limited. RSVP required at:  
[TelHai.org/TasteofTelHai](http://TelHai.org/TasteofTelHai)



A TASTE of  
**Tel Hai**



**Tuesday,  
June 17  
11 AM – 2 PM**  
Fun Eats,  
Open Homes  
& Great  
Conversation!

Join us for a fun and informal block party in our charming cottage neighborhood called Maple Knoll. We'll be closing off the streets and opening up resident homes so you can chat, eat and stroll your way through this delightful pocket of our 148-acre campus.

RSVP required by June 6. Call Marketing at (484) 796-4262, email [info@TelHai.org](mailto:info@TelHai.org) or register online by visiting: [TelHai.org/blockparty](http://TelHai.org/blockparty)

Events held at StoneCroft, located at 4000 Tree Line Drive, Honey Brook, PA. Parking available adjacent to entrance.